

Mega 960

Chemical Delivery Pump

Trebor®'s Mega 960 is an air-operated, double-diaphragm chemical pump that is ideal for high-flow recirculation or bulk chemical delivery applications. The Mega 960 features Trebor's proprietary no-stall shuttle valve and 'smart pilot' air logic to reliably operate under high head-pressure and closed discharge valve conditions. This pump's fluid path is constructed entirely of PTFE and PFA to ensure the utmost in high-purity pumping and chemical compatibility. The non-metallic air chamber components make this pump suitable for use in aggressive acid vapor environments and eliminate the possibility of metal migration into the fluid.



Mega 960 Chemical Delivery Pump

Construction

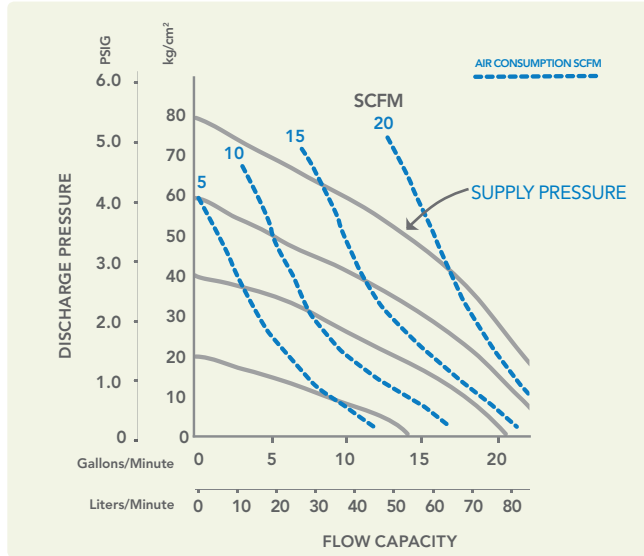
- ▶ PTFE/PFA fluid path ensures ultra-pure pumping
- ▶ Standard air-side seals are FKM (Viton®) – additional air-side seal options are available for unmatched chemical compatibility
- ▶ Patented (5,370,507) floating PTFE o-ring check valve for increased dry suction prime and overall pumping efficiency
- ▶ Non-penetrated double-layer PFA diaphragm design for long diaphragm life and safe double chemical containment
- ▶ Simple, compact design with externally accessible valves for easy service and preventive maintenance
- ▶ Clean room assembled, tested, and packaged
- ▶ One-year, no maintenance warranty

Performance Summary

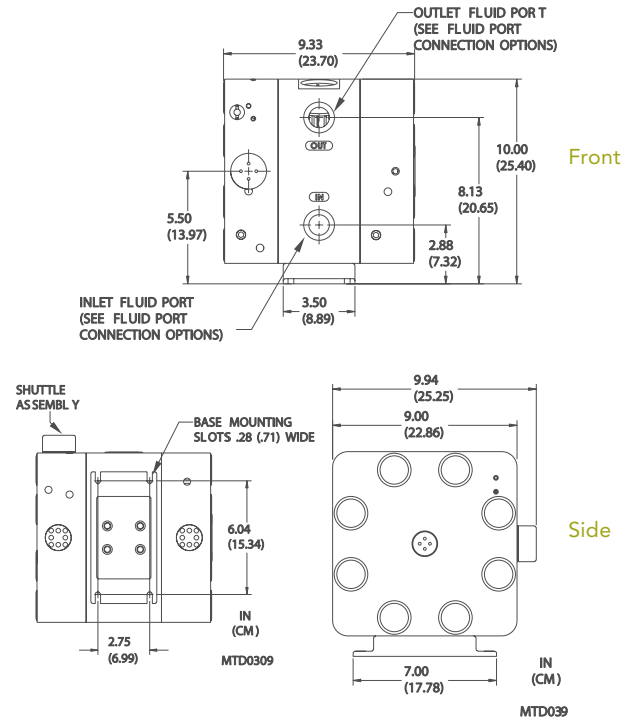
	English	Metric
▶ Maximum pressure	80 psig	.55 MPa
▶ Maximum flow rate	22 GPM	83 LPM
▶ Suction lift: dry water columns*	10 ft	3 m
▶ Maximum fluid operating temperature	212 °F	100 °C
▶ Dimensions	9.5" W 10" T 10" D	24.1 cm 25.4 cm 25.4 cm
▶ Weight	37 lbs.	16.8 kg

**Performance measurements taken with ambient temperature DI water*

Flow Capacity



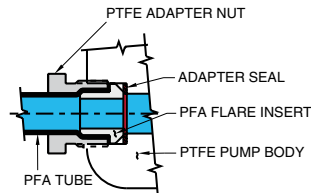
Dimensions in Inches (cm.)



Options and Ordering

Use the code numbers for ordering the following options for your Mega 960 Chemical Delivery Pump.

PUMP	960D	Mega 960 Pump Chemical Delivery
	960E	Mega 960 Pump External Control
FLUID CONNECTION	B12	3/4" PFA Welded Pipe Connector
	F12	3/4" Flare Tube Adapter
	F16	1" Flare Tube Adapter
	N16	1" Pillar Super 300
	P12	3/4" NPT Adapter Nuts
	P16	1" NPT Adapter Nuts
	T12	3/4" PFA Tube Stub-Out
	S01	1 1/4" Reduced Footprint Flare
SURGE SUPPRESSOR	00	No Surge Suppressor
	85	Model 85 Surge Suppressor – Pump Mounted
	95	Model 85 Surge Suppressor – Pump Mounted
SEALS	0	Standard FKM (Viton) air-side seals
	1	FFKM (Chemraz or Kalrez) air-side seals
OPTIONS	A0	No Option
	A1	Cycle Probe. Requires monitoring device
	A2	Quick Change Base
	A4	Leak Probes
	A6	Remote Exhaust



Example of an order number based on configuration options:

960D F16 95 A2

Chemraz® is a registered trademark of Greene Tweed Corporation
 Viton® and Kalrez® are registered trademarks of DuPont Dow Elastomers
 Trebor® and the Trebor logo are registered trademarks of IDEX Corporation
 ©2010 Trebor, Inc., A Unit of IDEX Corporation

T4/IDX1131/08.10