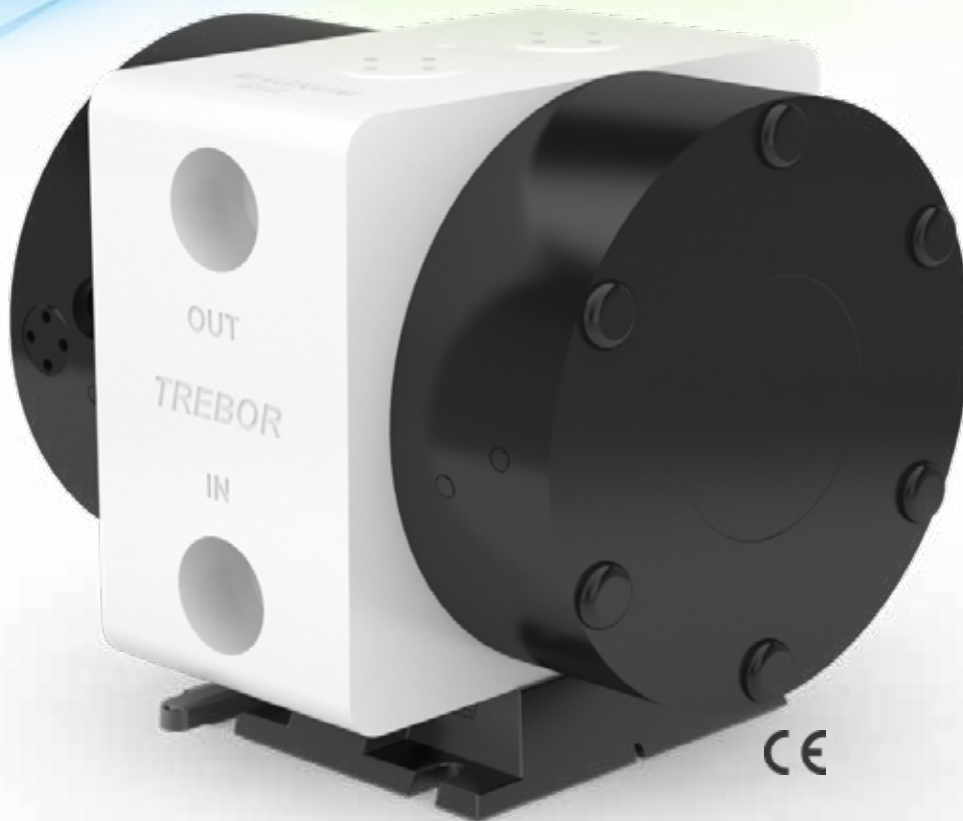


MAGNUM 610

Reliability Defined



**HIGH SUCTION
CAPABILITY**
(PATENTED FLOATING
PTFE CHECK VALVE)

**PTFE/PFA
FLUID PATH**

**NON-PENETRATED,
DOUBLE LAYER
PFA DIAPHRAGM**

**ADJUSTABLE
EXHAUST MUFFLER**
(FOR HIGH BACKPRESSURE/
LOW FLOW)

The Magnum 610 was designed with the help of end users to meet the needs of chemical recirculation applications with moderate flow rates. It's a simple, compact design that utilizes few moving parts for improved serviceability. This is a highly reliable pump due in part to our patented non-stall air logic design.

This is PURE INNOVATION.



MAX FLOW
36 LPM / 9.5 GPM



MAX TEMPERATURE
100 °C / 212 °F



MAX PRESSURE
60 PSI / .41 MPa



DRY SUCTION LIFT
9' / 2.7m

Trebor uses virgin PTFE and PFA in all products...no re-processed material is allowed.

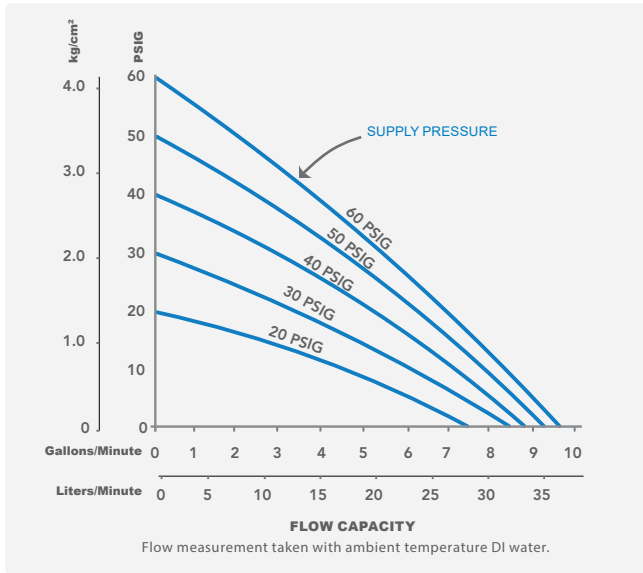
Trebor International | North/South America +1 800 669 1303 | Europe +49 9120 1804-65 | Asia +65 6684 7319

TREBOR®

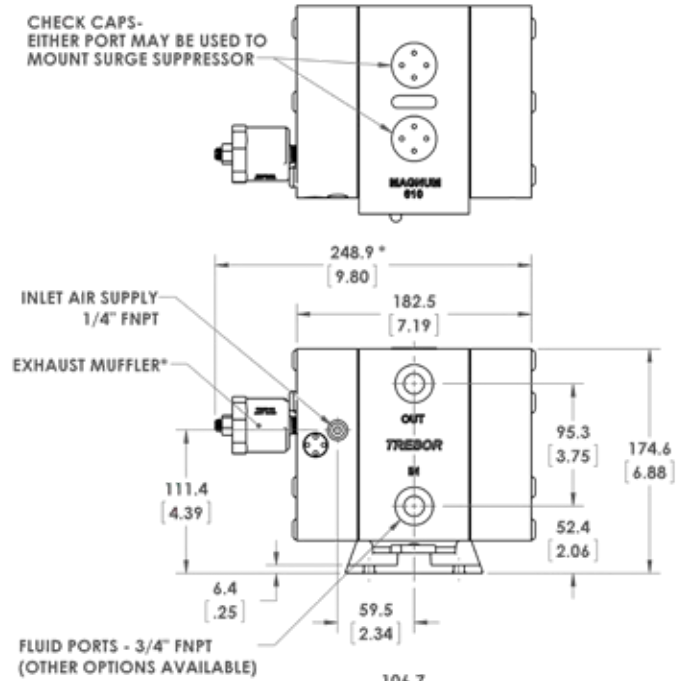
treborintl.com

A Unit of IDEX Corporation

FLOW PERFORMANCE



DIMENSIONS IN MILLIMETERS (IN.)



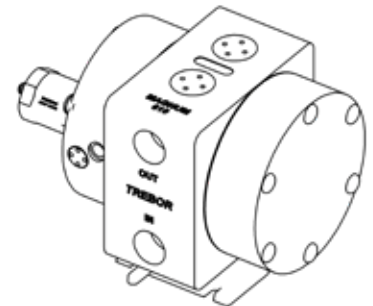
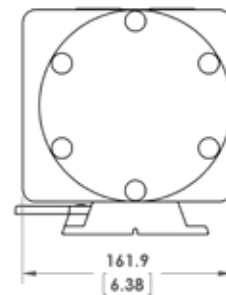
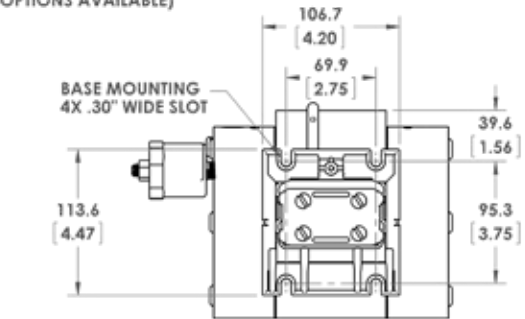
PUMP OPTIONS

PUMP	610R	Magnum 610 Recirculation Pump
	610E	Magnum 610 External Control Pump
	610NM	Magnum 610 Non-Metallic Pump
FLUID CONNECTION	000000	3/4" NPT-Without Fluid Port Fittings
	1F0800	1/2" Flare Tube Adapter
	1F1200	3/4" Flare Tube Adapter
	1T1200	3/4" PFA Tube Stub-Out
OPTIONS	A0	No Option
	A2	Ceramic Shuttle (610R Only)
	A5	Air Filter

Example of an order number based on configuration options:

610R F1200 A6

Compatible with our SS85 and SS95 Surge Suppressors



* Exhaust muffler may be located remotely for space considerations