

# QUANTUM 9

---

## Appendix to Manual

SERIAL NUMBER:

PATENTS: U.S. 6544583B2, U.S. 6479094, U.S. 6433319, U.S. 6580061B2,  
U.S. 6663914; ADDITIONAL PATENTS PENDING

# CONTENTS

---

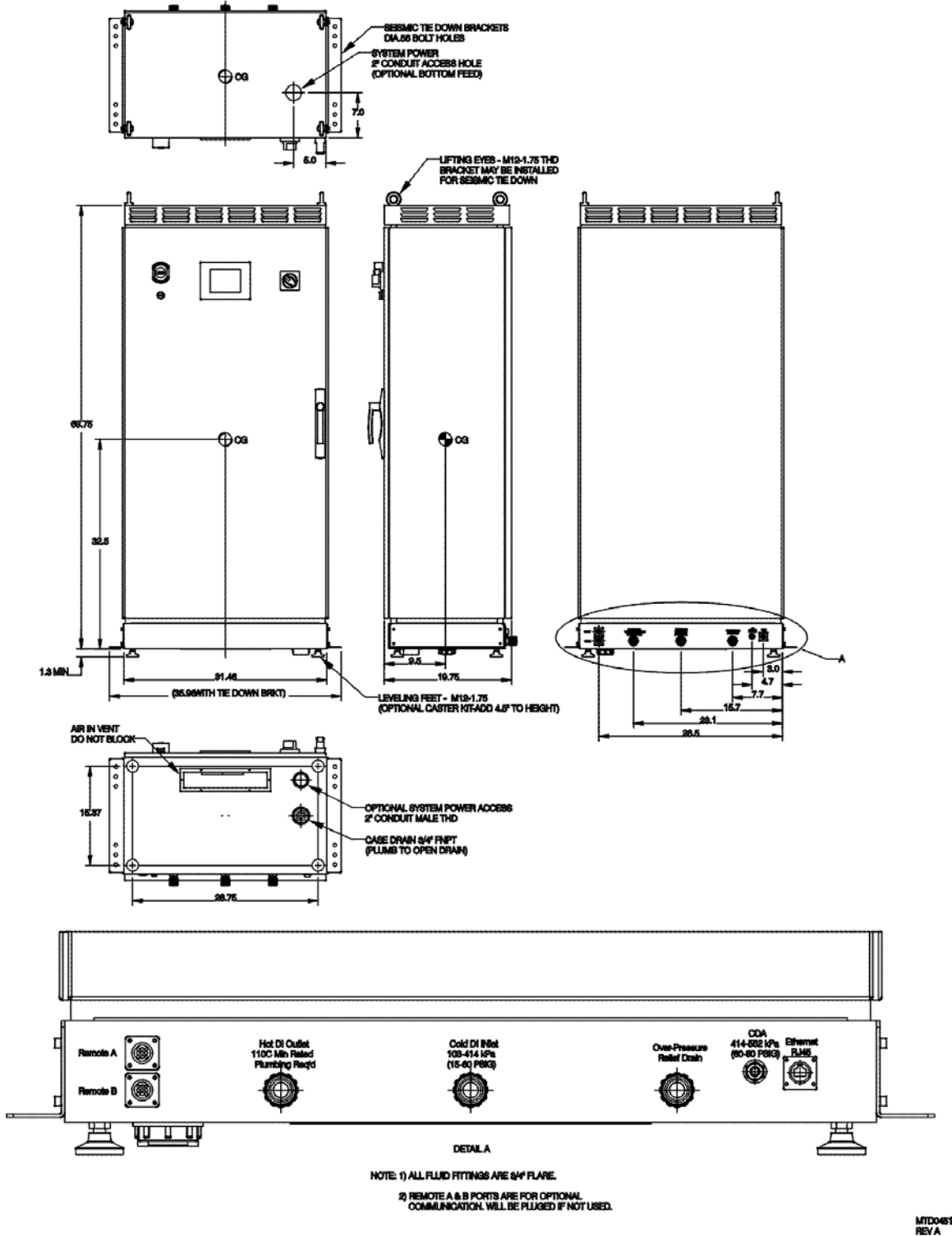
<b>1</b>	<b>APPENDIX: QUANTUM 9</b> .....	<b>3</b>
1.1	UTILITY REQUIREMENTS .....	3
1.2	SYSTEM REQUIREMENTS.....	6
1.3	SPARE PARTS .....	7
1.4	WIRING SCHEMATIC.....	7

# 1 APPENDIX: QUANTUM 9

---

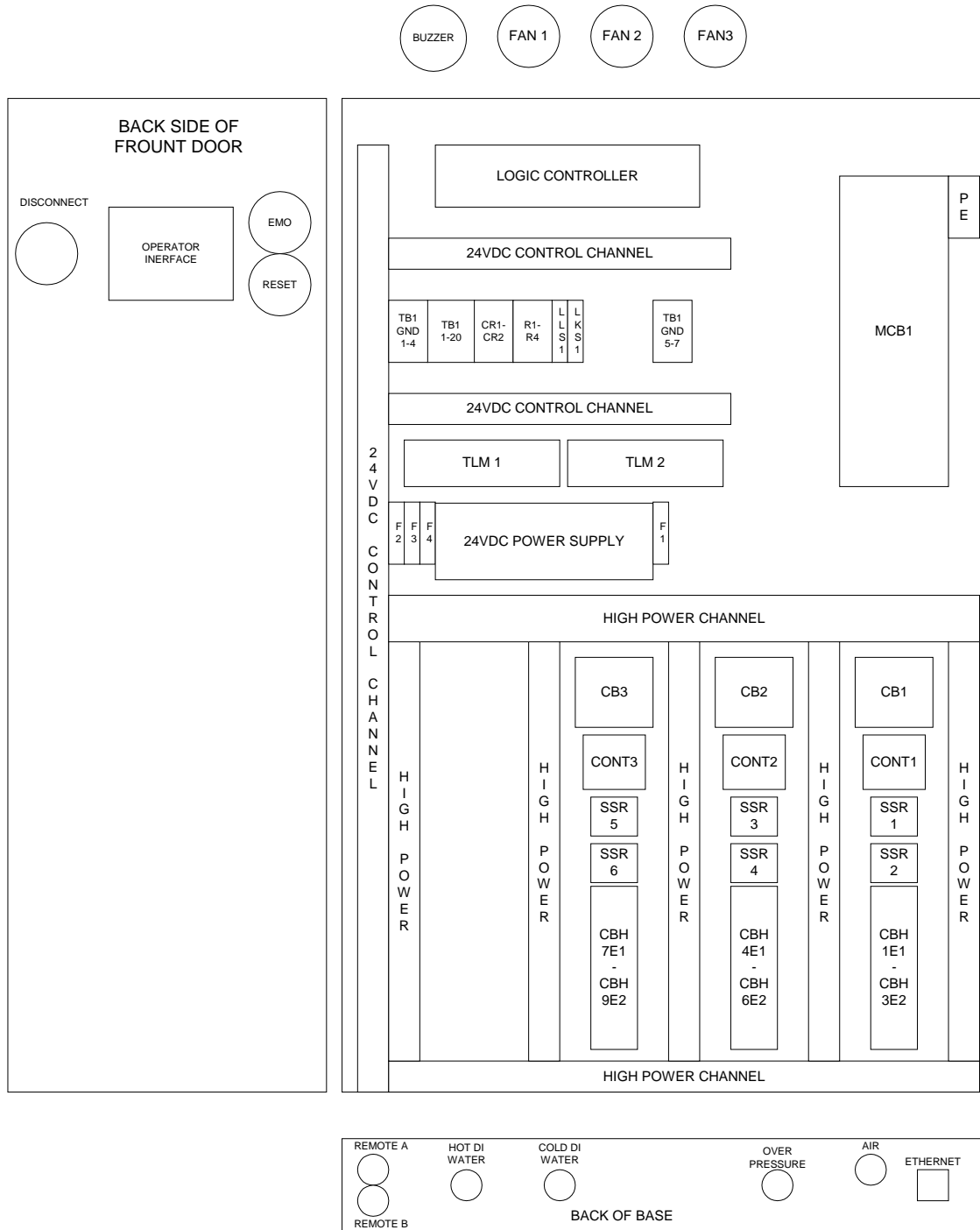
## 1.1 UTILITY REQUIREMENTS

<b>Remote Signals:</b>	Standard Ethernet, RJ-45 Connector See schematic for wiring options.
<b>Cold DI Inlet:</b>	3/4" Flare PFA Tube 103-414 kPa (15-60 psig)
<b>Hot DI Outlet:</b>	3/4" Flare PFA Tube Discharge line must be restricted to create adequate backpressure >103 kPa (15 psig). A flow restriction may be required at the point of use to limit discharge rate.
<b>Overpressure Relief Drain:</b>	3/4" Flare PFA Tube 3/4" flare tube or equivalent <20m (60 ft.) length to open drain
<b>CDA or N2:</b>	1/4" Tube – Pressure source for diaphragm valve on DI Water Inlet 414-552 kPa (60-80 psig)
<b>Cabinet Drain:</b>	Open to drain (do not tie to overpressure line)
<b>System Weight:</b>	Dry Kg. (lbs): 209 Kg (460 lbs.)
<b>Min. Dimensions:</b>	178cm x 81cm x 51cm (70"H x 32"W x 20"D)



**Figure 1-1: Facility Installation Layout**

**NOTE:** Accessibility to open or remove the front and back panels is required for maintenance of the heater.



MTD0465

Figure 1-2: Electrical Component Layout

## 1.2 SYSTEM REQUIREMENTS

### 108kW 480VAC Standard Configuration

**Model Number:** QTM108V480A00  
**Heating Module:** QA1V480P12  
**Typical Resistance:** Consult factory  
**System Power:** 480 volts, 3 phase, 50/60 Hz, 135 Amp Full Load  
175 Amp over-current protection provided at machine hook-up terminals  
Machine Interrupting Rating 35kA

### 90kW 480VAC Standard Configuration

**Model Number:** QTM090V480A00  
**Heating Module:** QA1V480P10  
**Typical Resistance:** Consult factory  
**System Power:** 480 volts, 3 phase, 50/60 Hz, 110 Amp Full Load  
150 Amp over-current protection provided at machine hook-up terminals  
Machine Interrupting Rating 35kA

### 90kW 415VAC Standard Configuration

**Model Number:** QTM090V415A00  
**Heating Module:** QA1V415P10  
**Typical Resistance:** Consult factory  
**System Power:** 415 volts, 3 phase, 50/60 Hz, 140 Amp Full Load  
175 Amp over-current protection provided at machine hook-up terminals  
Machine Interrupting Rating 35kA

### 90kW 380VAC Standard Configuration

**Model Number:** QTM090V380A00  
**Heating Module:** QA1V380P10  
**Typical Resistance:** Consult factory  
**System Power:** 380 volts, 3 phase, 50/60 Hz, 140 Amp Full Load  
175 Amp over-current protection provided at machine hook-up terminals  
Machine Interrupting Rating 35kA

### 1.3 SPARE PARTS

The most common replacement parts are listed below. For items not listed please contact Trebor.

PART NO.	DESCRIPTION	RECOMMENDED SPARE QTY.
98003412	Fuse, 3 Amp, CCMR	3
98003413	Fuse, 5 Amp, CCMR	1
98004141	SSR;125A;4-32VDC IN;48-660V OUT;TYCO	3
AE112	Gasket, SSR, Thermobond	3
Heating Module	See System Requirements for part number.	1
AF174	Over-pressure Burst Fitting	1

Please specify system Model Number and Serial Number when ordering spare parts. Consult factory for other parts not shown above.

### 1.4 WIRING SCHEMATIC

See system label for schematic number(s). See attached fold out sheets.